



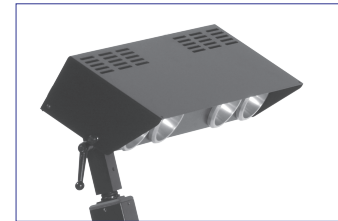
REPRO-GRAPHIC WORKSTATION 2532

An integrated media copy system designed for ease-of-use in production facilities, where high quality images, versatility and speed are essential.

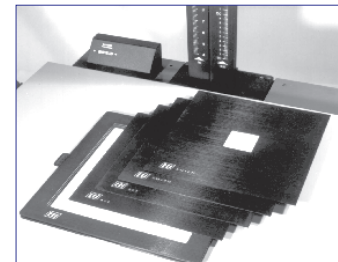


Shown with TTI Digiflex 67ei, TTI Reflex Viewer, and Phase One Slide Adapter.

- FINE ART
- ARCHIVING PHOTOS & ART
- MAPS
- COLOR SEPARATIONS
- DEFENSE & INTELLIGENCE
- DESKTOP PUBLISHING
- GENERAL IMAGING
- FORENSICS
- INDUSTRIAL
- MEDICAL RECORDING
- MILITARY CATALOGING
- PRE-PRESS
- DIGITAL PRE-PRESS



TTI lighting is engineered for extraordinarily glare-free and even illumination.



Transmissive Light Source: A wide assortment of standard and custom precision-made masks are available. (Optional)

Designed for the commercial workplace, no effort has been spared to make this workstation exceedingly rigid, perpendicular and parallel. High quality components enhance accuracy and performance. The result is an instrument, which maximizes the capabilities of your digital camera or scanner. It lets you capture clear, sharp images with minimum effort and maximum speed. With state of the art illumination systems, electronics, optics and precision electro-mechanical drives, the TTI Repro-Graphic Workstation 2532 is a totally integrated image capture system. Simply put, it is the most rugged and precise digital camera/scanner platform commercially offered. It is an investment, which will withstand many years of continuous use.

PRECISE & EASY IMAGE CAPTURE

The TTI repro-graphic workstation 2532 lets you capture clear, sharp images with minimum effort and maximum speed.

Base Frame

Heavy gauge steel tubing, welded to form an exceptional rigid base. This structural base is designed to minimize vibration from the ground surface. Adjustable feet provide the initial leveling of the workstation.

Work Table

1-5/8" thick, fully covered with heavy duty laminate, provides a flat, durable surface for many years of care free use.

Column

A massive aluminum extrusion provides an extremely rigid column which cannot twist or sag. A built-in unique leveling system provides perpendicular adjustment to the work table. The column reference scale is printed in crisp, easy to read numbers in inches and centimeters for a quick visual check while positioning the camera.

Elevation Carriage

The moving carriage is driven by a heavy-duty motor and lead screw, the preferred method for precision travel. This provides smooth camera movement and automatic lock at any position.

Camera Mount

TTI's exclusive mounting system is designed to provide exceptional support for any camera or scanner, maintaining optical center throughout the elevation range. A vital detail so often overlooked by others. TTI also provides camera mounts for most digital cameras, scanning backs, film cameras, medium and large formats.

Lenses & Lens Mounts

TTI carefully selects the best Apo-Chromatic lenses to suit the application. Lenses mount on TTI quick change rotating lens boards.

Digital Elevation Counter

This digital readout monitors the camera elevation. It is precise and repeatable, allowing exact replications of previous settings, a valuable tool in a production environment.

Media Holding System

Book type, hinged glass holder with 2 registered pins and anti-Newton ring glass holds media flat. Precision fitted light masks can be oriented in portrait or landscape mode. (An optional tabletop vacuum easel can be used.)

Reflective Light Source

With most of the heat exiting from the rear reflector of the lamps, the TTI reflective lighting system provides brightness, evenness of illumination and a cool work surface. Reflective lighting available as stand alone.

Transmissive Light Source

Unparalleled evenness of illumination and brilliance is the result of TTI's meticulous engineering. The highly efficient cooling system is designed to protect any media from heat or UV, which could cause damage and focus shift, during work sessions. A common occurrence with other light sources.

Media Holding System

Book type, hinged glass holder with 2 registered pins and anti-Newton ring glass holds media flat. Precision fitted light masks can be oriented in portrait or landscape mode.

SPECIFICATIONS

Repro-Graphic Workstation 2532

Column height:	60"
Power elevation:	Variable speed hand held remote control.
Camera mount:	Positive click-stop center; +/-90 degree rotation.
Work surface height:	30"
Work surface size:	25" x 32"
Reflective lighting:	600-1000 W, Quartz Halogen 3200K or Daylight 400W 5500K.
Overall dimensions:	68"W x 33"D x 90"H
Power requirement:	120VAC, 50/60Hz., 6-15A.
Shipping weight:	210 lbs. (1) crate and (1) box

OPTIONAL ACCESSORIES

Camera mount:	35mm, medium format and large format.
Cameras:	TTI Digiflex 45ei; TTI Digiflex 67ei and other cameras.
Graflock interface plate:	For medium format digital camera backs.
Lens mounts:	Extension/recess or additional flat lens boards.
Lenses:	Highest quality Apo-Chromatic digital lenses available from TTI.
Reflective Lighting:	TTI-LED System 2100-48
IR Filter:	Threads in front of lens barrel (scanning backs).
Polarize filter holders:	For all TTI reflective lighting.
Transmissive lighting:	Built-in 250W quartz halogen 3200K 10"x10" illumination.
Media holding system:	Hinged glass holder with 2 registered pins and anti-Newton ring glass.
Registered masks:	Included: 8" x 10", 4" x 5", 6x6cm and 35mm mounted slide.
Light amplifier:	Increases light output for 4"x5" format and smaller.
Vacuum easels:	Table top or built-in copy board (see TTI Vacuum Easels line)
Magnetic bars:	Help in positioning media when used in conjunction with vacuum easel.
Wall mount/brace:	For larger sizes than 25" x 32" and for eliminating vibration.
Tripod mount adaptor:	All TTI Cameras also mount on tripod for 3D controlled captures



TARSIA TECHNICAL INDUSTRIES, INC. | 93 Marcus Boulevard, Hauppauge, NY 11788 Ph: 631-231-8322
web: www.TTIInd.com | e-mail: info@TTIInd.com

THE REPRO-GRAPHIC COPY SYSTEM IS SHOWN COMPLETE. SOME ITEMS ARE OPTIONAL. ADDITIONAL ACCESSORIES ARE NOT SHOWN. CALL FOR PRICES AND AVAILABILITY.
ALL TRADEMARKS ARE THE PROPERTY OF THEIR RESPECTIVE OWNERS. SPECIFICATIONS, DESIGN AND FEATURES ARE SUBJECT TO CHANGE WITHOUT NOTICE.
© 2008 TARSIA TECHNICAL INDUSTRIES. PRINTED IN THE U.S.A.